

## A multimedia workstation for telemedicine

**VIMED® DOC BASIC** is a powerful telemedical device for the physician, who acknowledges the importance of leading-edge audio-video communications.

VIMED® DOC BASIC consists of robust hardware made up of a PC tower, a primary 19" TFT medical monitor, a secondary 19" TFT monitor and a controllable camera.



The presence of two monitors allows the medical practitioner to view one complete screen for exploration of DICOM data without impairing video communication on the second screen.

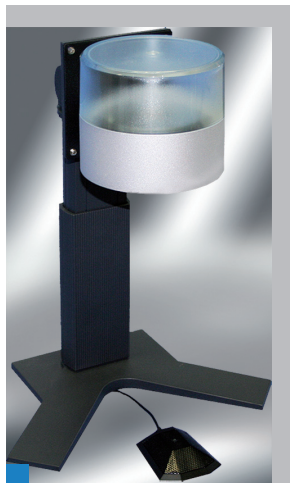
PC is approved to DIN EN 60601-1-2 standards. The power supply is approved to DIN 60601-1-1 standards.

The latest audio-video communication technologies ensure exemplary sound and image quality at low bandwidths.

### VIMED® DOC BASIC

- Specialised medical video communication
- Controllable high resolution camera
- 18-fold optical zoom
- One 19" TFT medical monitor and one 19" regular monitor
- Exploration of DICOM data
- CE certified
- Exemplary image and sound quality

### VIMED® VOICE



The controllable high-resolution camera, with optical zoom, renders the smallest details accessible to the physician.

The audio stream is received by default setting via a headset.

Several medical personnel can contribute and communicate simultaneously using VIMED® VOICE.

VIMED® DOC BASIC sends and receives DICOM data allowing integration into RIS or PACS.

VIMED® DOC BASIC is designed especially where remote audio-visual transmission is necessary.

## Technical data

Processor	Intel® Core™ 2 Duo
Working memory	2048 MByte (max. 4 GB)
Graphic board	Intel Graphics Media Accelerator 950
Hard disc	2 x 160 GB S-ATA II (RAID 1, mirroring)
Optical drive	DVD+/-RW drive, 3,5" Floppy (1.44 MB)
Network	Onboard 10/100/1000 MBit/s (RJ-45) / Galvanic isolated network for medical used devices according to DIN EN 60601-1-1
Case	ATX Midi-Tower PC607 (width: 210 x height: 455 x depth: 445 mm, incl. cables / connectors)
Power supply	400W "MPG" power supply unit, fulfilling standards EN 60950, EN 55022, EN 55082-1, EN 55011, CE EMV DIN EN 60601-1-2 power supply unit DIN EN 60601-1-1
Input devices	101-universal keyboard and optical mouse
Medical features	PC is approved for EMC corresponding to DIN EN 60601-1-2
Software	Microsoft® Windows® XP Professional OEM, Microsoft® Windows® Office 2003 Professional OEM, Nero 7 Essentials Vista OEM Suite, eTrust Antivirus v7.1, VIMED® COMM DOC BASIC

## Video specifications

Network transfer rate	H.323: 64 Kbp/s – 4 Mbp/s
Video-standards supported video-resolutions	H.261, H.263, H.263+/+++, H.264 outgoing up to 512 Kbp/s, incoming up to 1.5 Mbps Bidirectional Interlaced CIF, SIF, QCIF, QVGA, VGA; only receiving 720p
Charing data channel	Supporting H.239 and Tandberg DuoVideo
Network specifications	ITU-T: H.323 v4.2 / H.281 Annex Q (FECC) / H.323 QoS Feature; encrypted conferences corresponding to H.235 (AES) possible / LDAP-Support
<b>Camera</b>	
Camera sensor size	1/4", 752 x 582 Pixel
Camera standard	PAL, 25 frames/sec.
Camera shutter	1s - 1/10.000s, min. light sensibility 0,7 Lux at f=1,4 signal-to-noise ratio 50 dB
Camera objective	f = 4,1...73,8 mm F=1,4 – 3,0 / AF 216 optical zoom 18 fold
Camera control	Pan & tilt & zoom function
<b>Displays</b>	1 x medical and 1 x standard monitor
Display size	Medical: 48 cm (19 inch) 4:3 TFT-LCD (1,3 Megapixel, colour) / Standard: 48 cm (19 inch) TFT-LCD
Visible display measures (width x height)	Both monitors: 376 mm x 301 mm (landscape), Diagonal: 481 mm
Ideal and recommended display resolution	Both monitors: 1280 x 1024 Pixel (pixel size 0,294mm x 0,294mm)
Displayed colours	Both monitors: 16,7 Millions from 1 Milliard (8 Bit from 10 Bit per RGB)
Luminance Constance measurement	Medical: yes ; Standard: no
Maximum Brightness	Medical: 280 cd/qm (typically), recommended: 170 cd/qm at 7500 Kelvin / Standard: 250 cd/qm
Dark room contrast	Medical: 800:1 (typical) ; Standard: 1.000:1 with Contrast Enhancer
Maximum visual angle	Medical: Horizontal: 176°; Vertical: 176° / Standard: Horizontal: 178°, Vertical: 178°
Dimensions (W x H x D), weight	Medical: 414 mm x (410- 510 mm) x 203 mm, 8,1 kg / Standard: 405 mm x (407 - 507 mm) x 205 mm, 7,2 kg
Mark of conformity	Medical: TÜV GM, CE (EN 60601-1, EN 60601-1-2) / Standard: CE, TÜV GS, TÜV Ergonomic, ISO 13406-2, TCO 03, Energy Star

## Audio specifications

Audio-Standards	G.711, G.722, G.722.1, G.723.1, G.728, G.729, AAC-LD
Audio-Features	Full duplex echo cancellation, Automatic noise suppression (ANS), Voice Activity Detection (VAD)
Audio-In/-Output	VIMED® VOICE (optional Headset)

## DICOM specifications

Key Features	Flexible Screen-Layout / multifunctional toolbar / Advanced "Cine" function; Generation of Patient-CD's / Extensible
Extended functionality	Multiplanar Reconstruction (MPR) / Digitale Subtractions-Angiography (DSA) / generation of AVI-files; export of AVI-files / DICOM Printouts / 3D-Cursor function / CE- certified
DICOM compatibility	DICOM 3.0 supports storage und query/Retrieve classes as Service Class User (SCU) and Service Class Provider (SCP)

## General indicated

Power supply	AC 200-240 V, 50/60 Hz, IP 20
Total weight	app. 25 kg
Dimensions	ca. 915 mm x 435 mm x 520 mm (components on desk top)

VIMED® DOC BASIC is a telemedicine system from the MEYTEC GmbH Informationssysteme and a part of the VIMED® 2000 system family  
Last Change: 06 January 2010. All data without guarantee. Changes and mistakes reserve.

**Competence for telemedicine and eHealth**

MEYTEC GmbH  
Informationssysteme

Akazienstr. 1  
16356 Werneuchen OT Seefeld

Phone +49 (0) 33398 – 78 200  
Fax +49 (0) 33398 – 78 299

info@meytec.com  
www.meytec.com

